



## YJ-U100

### Full Digital Palm Ultrasound Scanner



#### **Main Features:**

Full digital beam forming technology

Generate Report

Human and Veterinary double system(depend on your needs)

7 inch TFT LCD

A/DC and LI-battery operated

Light and compact design, simple to use

High quality keyboard and clear image

USB 2.0 for real-time picture uploading to PC

Probe automatic identification



Net weight: 1.2 Kgs

Dimension: 320×170×65mm

## **Main Technical Specification:**

- Scanning Method: Convex, Micro-convex, Linear, Transvaginal
- Frequency for Convex : 2.0, 2.5, 3.0, 3.5, 4.0, 4.5, 5.0
- Display Mode: B, B+B, B+M, M, 4B
- Gray Scale: 256 levels
- Gamma: 4
- Monitor: 7 inch LCD
- Operation interface: English/Chinese switchable
- Scanning Depth : 180mm
- Image magnification: \*1.0, \*1.2, \*1.3, \*1.5, \*1.6, \*1.8, \*2.0 times
- Image control: left/right, black/white, up/down
- General Measurement: Distance, Circumference/Area, Volume, Heart Rate
- 512 frames for cine-memory
- Human Body Mark : 15 kinds
- 4 focusing combination selectable
- Characteristic showing in real-time clock, ID, Sex, Age, Hospital name, Focusing Info and Gain (Near, Far, Overall) info.
- 8 Segments of TGC adjustment, full gain control
- Puncture function is available under B mode.
- Generate HistoG

## **Human Measurement:**

OB : CRL

GS

BPD-FW

FL-FW

AC-FW

HC-FW



APTD-FW

APD-FW

### Standard configuration:

Main unit

Convex array probe

Li-battery

USB

### Options:

Linear array probe

Micro-Convex array probe

Trans-vaginal array probe

Video Printer





Forever Medical





Forever Medical





Forever Medical

---

## Digital Portable Ultrasound Scanner YJ-U100A



### Main Features:

---

Powerful measurement & calculation software packages

8-Segment TGC Trackball adjustment

10 inch VGA monitor

OB measurements: BPD, GS, CRL, FL, AC, HC, etc

Permanent function of image store: 32 images

All back light keyboard

2 probe connectors

Probe automatic identification

### Main Technical Specification:

---

Scanning mode: Convex/Linear/Trans-vaginal/Trans-rectal;

Display modes: B, B+B, B+M, M, 4B;

Scanning depth: 240mm;

Gray scales: 256;

Body marks: 18;

Function of image magnification: image zoom (real-time status under B mode), up to



5 times (area); local amplification function which can be enlarged under the real-time and froze;

Image conversion: up/down, left/right, black/white;

Function of puncture guide;

Max dynamic range  $\geq 100$ db;

Detecting depth  $\geq 190$ mm, scanning depth  $\geq 240$ mm;

The geometric location accuracy: vertical  $\leq 5\%$ ; lateral  $\leq 5\%$ ; blind spot:  $\leq 4$ mm;

Vertical resolution:  $\leq 1$ mm (depth  $\leq 130$ mm)  $\leq 2$ mm (130mm < depth < 170mm);

Lateral resolution:  $\leq 1$ mm (depth  $\leq 130$ mm)  $\leq 2$ mm (130mm < depth < 160mm);

Gamma: 4 gray scale Gamma transform function;

Variety of focus selection and multi-stage dynamic focusing with 4 transmit focus; support to launch multi-focus combination;

Built-in pseudo color processor, Pal-D and VGA video output, can connect external screen monitors, color monitors, VCRs, video image printer and other equipment.

Fixed characters and real-time clock and calendar display;

Software reset function;

Printer function: can connect laser printer and Video printer directly;

Comment: Date, Name, Sex, Age, Hospital, Annotation;

Zooming: \*1.0, \*1.2, \*1.5, \*2.0;

Port: USB 2.0, VGA, Video connector;

Wide application: abdomen, OB/GYN, urology, cardiology, small parts etc;

USB Function of image store: more than Sixteen thousand images;

Power supply: AC 110V-240V, 50HZ/60HZ;

Probe connector: 2;

USB/VGA/ print ports;

Video connector;

### Measurement:

General menu: Distance, Area, Volume, Angle, Ellipse;

Obstetrics menu: GS, CRL, BPD, HC, AC, FL, Fetus Weight;

Heart menu: Distance, Time, Slope, Rhythm;

### Standard configuration:

10 inches CRT main unit 1set;

60R/3.5MHZ Convex array probe 1pc;

Power line 1pc;

Ground line 1pc;

Fuse 4 pc;

User's manual in English 1pc;

Warranty card 1pc;

### Options:

L40/7.5MHZ Linear array probe;

20R/5.0MHZ Micro-Convex array probe;

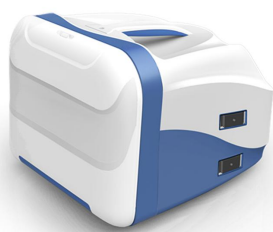


---

13R/6.5MHZ Trans-vaginal array probe;  
7.5MHZ Trans-rectal probe;  
Mitsubishi Video Printer P93C;

**Pictures:**

---



**Probes:**

---

2.5-7.5mhz Convex array probe;

5.0-10.0Mhz High frequency linear probe



4.0-5.5Mhz Micro-convex array probe 5.0-7.5Mhz Transvagional probe



5.0-10.0Mhz Trans-rectal probe



Animal use type:



Forever Medical





## Digital Laptop Ultrasound Scanner YJ-U100B



### Main Features:

Powerful measurement & calculation software packages  
8-Segment TGC ABD Trackball adjustment  
12 inch LCD monitor  
Permanent function of image store: 32 images  
Back-lit keyboard  
OB measurements: BPD, GS, CRL, FL, AC, HC, etc  
2 probe connectors  
Probe automatic identification

### Main Technical Specification:

Scanning mode: Convex/Linear/Micro-convex/Trans-rectal;  
Display modes: B, B+B, B+M, M, 4B;  
Scanning depth: 240mm;  
Gray scales: 256;  
Function of image magnification: image zoom (real-time status under B mode), up to 5 times (area); local amplification function which can be enlarged under the real-time and froze;  
Image conversion: up/down, left/right, black/white;



---

Function of puncture guide;  
Max dynamic range $\geq 100$ db;  
Detecting depth $\geq 190$ mm, scanning depth $\geq 240$ mm;  
The geometric location accuracy: vertical $\leq 5\%$ ; lateral $\leq 5\%$ ; blind spot:  $\leq 4$ mm;  
Vertical resolution:  $\leq 1$ mm (depth $\leq 130$ mm)  $\leq 2$ mm (130mm $<$ depth $< 170$ mm);  
Lateral resolution:  $\leq 1$ mm (depth $\leq 130$ mm)  $\leq 2$ mm (130mm $<$ depth $< 160$ mm);  
Gamma: 4 gray scale  $\gamma$  transform function;  
Variety of focus selection and multi-stage dynamic focusing with 4 transmit focus;  
support to launch multi-focus combination;  
Built-in pseudo color processor, Pal-D and VGA video output, can connect external  
screen monitors, color monitors, VCRs, video image printer and other equipment.  
Fixed characters and real-time clock and calendar display;  
Software reset function;  
Printer function: can connect laser printer and Video printer directly;  
Comment: Date, Name, Sex, Age, Hospital, Annotation;  
Zooming: \*1.0, \*1.2, \*1.5, \*2.0;  
Port: USB 2.0, VGA, Video connector;  
USB Function of image store: more than Sixteen thousand images;  
Power supply: AC 110V-240V, 50HZ/60HZ;  
Probe connector: 2;  
USB/VGA/ ports;  
Video printer connector;

### Measurement:

General menu: Distance, Area, Volume, Angle, Ellipse;  
Obstetrics menu: GS, CRL, BPD, HC, AC, FL, Fetus Weight;  
Heart menu: Distance, Time, Slope, Rhythm;

### Standard configuration:

---

12 inches LCD main unit 1set;  
60R/3.5MHZ Convex array probe 1pc;  
Power line 1pc;  
Ground line 1pc;  
Fuse 4 pc;  
User's manual in English 1pc;  
Warranty card 1pc;

### Options:

---

L40/7.5MHZ Linear array probe;  
20R/5.0MHZ Micro-Convex array probe;  
6.5MHZ Transvaginal l probe;  
Mitsubishi Video Printer;  
Inside battery(3hours);



Forever Medical





Forever Medical



Probes:

Convex array probe;

High frequency linear probe



Micro-convex array probe

Transvaginal probe





Forever Medical

---

Trans-rectal probe



Animal Use: Transrectal probe





## Digital Portable Animal Ultrasound Scanner YJ-U100C



### Main Features:

Powerful measurement & calculation software packages

8-Segment TGC ABD Trackball adjustment

10 inch VGA monitor

Permanent function of image store: 32 images

Back-lit keyboard

2 probe connectors

Probe automatic identification

### Main Technical Specification:

Scanning mode: Convex/Linear/micro-convex/Trans-rectal;

Display modes: B, B+B, B+M, M, 4B;

Scanning depth: 240mm;

Gray scales: 256;

Function of image magnification: image zoom (real-time status under B mode), up to



5 times (area); local amplification function which can be enlarged under the real-time and froze;

Image conversion: up/down, left/right, black/white;

Function of puncture guide;

Max dynamic range $\geq$ 100db;

Detecting depth $\geq$ 190mm, scanning depth $\geq$ 240mm;

The geometric location accuracy: vertical $\leq$ 5%; lateral $\leq$ 5%; blind spot:  $\leq$ 4mm;

Vertical resolution:  $\leq$ 1mm (depth $\leq$ 130mm)  $\leq$ 2mm (130mm $<$ depth $<$ 170mm);

Lateral resolution:  $\leq$ 1mm (depth $\leq$ 130mm)  $\leq$ 2mm (130mm $<$ depth $<$ 160mm);

Gamma: 4 gray scale Gamma transform function;

Variety of focus selection and multi-stage dynamic focusing with 4 transmit focus; support to launch multi-focus combination;

Built-in pseudo color processor, Pal-D and VGA video output, can connect external screen monitors, color monitors, VCRs, video image printer and other equipment.

Fixed characters and real-time clock and calendar display;

Software reset function;

Printer function: can connect laser printer and Video printer directly;

Comment: Date, Name, Sex, Age, Hospital, Annotation;

Zooming: \*1.0, \*1.2, \*1.5, \*2.0;

Port: USB 2.0, VGA, Video connector;

USB Function of image store: more than Sixteen thousand images;

Power supply: AC 110V-240V, 50HZ/60HZ;

Probe connector: 2;

USB/VGA/ print ports;

Video connector;

## Measurement:

Wide application: Dog and Cat: GS, HD, CRL, BD  
Equine: CD, SD  
Cattle: CRL, HD, HL, TD  
Pig: HD, BD  
Sheep: HD, TD

## Standard configuration:

10 inches CRT main unit 1set;  
60R/3.5MHZ Convex array probe 1pc;  
Power line 1pc;  
Ground line 1pc;  
Fuse 4 pc;  
User's manual in English 1pc;  
Warranty card 1pc;

## Options:

L40/7.5MHZ Linear array probe;



20R/5.0MHZ Micro-Convex array probe;  
7.5MHZ Trans-rectal probe;  
Mitsubishi Video Printer P93;

**Pictures:**





**Probes:**

2.5-7.5mhz Convex array probe;

5.0-10.0Mhz High frequency linear probe



4.0-5.5Mhz Micro-convex array probe



5.0-10.0Mhz Trans-rectal probe





## Digital Trolley Ultrasound Scanner YJ-U100T



### Short introduction:

This product is suitable for the diagnosis of the soft tissue of the human dynamic graphics, such as the liver, gallbladder, kidney, spleen, pancreas, uterus, bladder, fetal, and family planning to check pregnant, check ring, obstetrics and gynecology.

### Main Features:



Powerful measurement & calculation software packages

8-Segment TGC adjustment

15 inches LCD screen

OB measurements: BPD, GS, CRL, FL, AC, HC, etc

Permanent function of image store: 32 images

Back-lit keyboard

2 probe connectors

Probe automatic identification

### Main Technical Specification:

Scanning mode: Convex/Linear/Trans-vaginal/Trans-rectal;

Display modes: B, B+B, B+M, M, 4B;

Scanning depth: 240mm;

Gray scales: 256;

Body marks: 33;

Function of image magnification: image zoom (real-time status under B mode), up to 5 times (area); local amplification function which can be enlarged under the real-time and froze;

Image conversion: up/down, left/right, black/white;

Function of puncture guide;

Max dynamic range $\geq$ 100db;

Detecting depth $\geq$ 190mm, scanning depth $\geq$ 240mm;

The geometric location accuracy: vertical $\leq$ 5%; lateral $\leq$ 5%; blind spot:  
 $\leq$ 4mm;

Vertical resolution:  $\leq$ 1mm (depth $\leq$ 130mm)  $<$   $\leq$ 2mm  
(130mm $<$ depth $<$ 170mm);

Lateral resolution:  $\leq$ 1mm (depth $\leq$ 130mm)  $<$   $\leq$ 2mm  
(130mm $<$ depth $<$ 160mm);



---

Gamma: 4 gray scale  $\gamma$  transform function;

Variety of focus selection and multi-stage dynamic focusing with 4 transmit focus; support to launch multi-focus combination;

Built-in pseudo color processor, Pal-D and VGA video output, can connect external screen monitors, color monitors, VCRs, video image printer and other equipment.

Fixed characters and real-time clock and calendar display;

Software reset function;

Printer function: can connect laser printer and Video printer directly;

Comment: Date, Name, Sex, Age, Hospital, Annotation;

Zooming: \*1.0, \*1.2, \*1.5, \*2.0;

Port: USB 2.0, VGA, Video connector;

Wide application: abdomen, OB/GYN, urology, cardiology, small parts etc;

USB Function of image store: more than Sixteen thousand images;

Power supply: AC 110V-240V, 50HZ/60HZ;

Probe connector: 2;

USB/VGA/ ports;

Video connector;

## Measurement:

---

General menu: Distance, Area, Volume, Angle, Ellipse

Obstetrics menu: GS, CRL, BPD, HC, AC, FL, Fetus Weight

Heart menu: Distance, Time, Slope, Rhythm

## Standard configuration:

---

Main unit 1 set

60R/3.5MHZ Multi-frequency Convex array probe

Power line 1pc



Ground line 1 pc

Fuse 4 pc

User's manual in English 1pc

Packing list 1pc

Warranty card 1pc

Options:

L40/7.5MHZ multi-frequency Linear array probe

20R/5.0MHZ multi-frequency Micro-Convex array probe

13R/6.5MHZ multi-frequency Trans-vaginal array probe


7.5R/7.5MHZ multi-frequency Trans-rectal probe

Mitsubishi Video printer P93C;

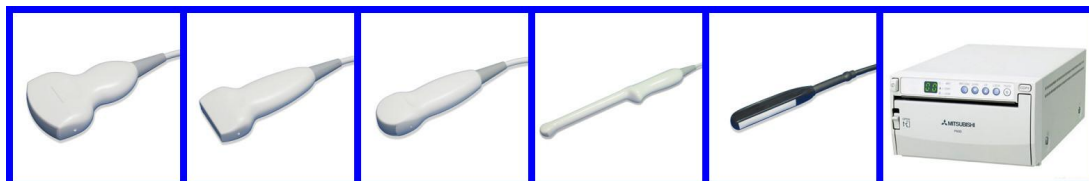




## Full-digital Trolley Color Doppler Ultrasound Scanner (YJ-U300T A/B)

<b>Standard Configuration</b>	
	Main unit
	15inch LCD Monitor
	Windows xp system and 64G hard disk
	Convex array probe and one more probe
	English User Manual
	B,2B,4B, B/M, M, B/C display mode
	Print/video/VGA/2 USB ports
	Color doppler, THI, Itouch, PW, CMF,B/C mode
	18 months After-sale Warranty
	Three probe connectors
<b>Optional Items</b>	
Description	
Linear array probe	
Micro-convex(Cardiac) array probe	
Trans-vaginal probe	
Rectal array probe	
Printer	

**Optional Picture .....**







Forever Medical

More Pictures





## Specification about Notebook Color Doppler YJ-U200A/B



### Display mode

B&W mode: B, 2B, 4B, B/M, M, B/C

Color Doppler mode: CFM, PDI, PW

Duplex: Real-time simultaneous 2D, Doppler

Gray scale: 256

Display: 15 inches LCD monitor

Transducer frequency: 2.0-12MHz

Digital technology: Dynamic Receiving Focusing (DRF)

Dynamic Frequency Scanning (DFS)

Scanning depth:  $\geq 300\text{mm}$

### Imaging Processing

Pre-processing: 8-segment TGC

Preset

Gain (B&W, Color, Doppler)

Audio

PRF

Dynamic Range

Image enhancement

Acoustic Power

Post-processing: gray map

Black/white reverse



Left/right reverse

Up/down reverse

### Functions:

- Cine-loop: 1200 frame cine loop memory
- Storage media: 32G(it depends on customer's request)
- Zoom: Pan Zoom
- USB ports: 2
- THI: tissue harmonic imaging
- ITouch
- IClear Imaging

### Measurement & Calculations

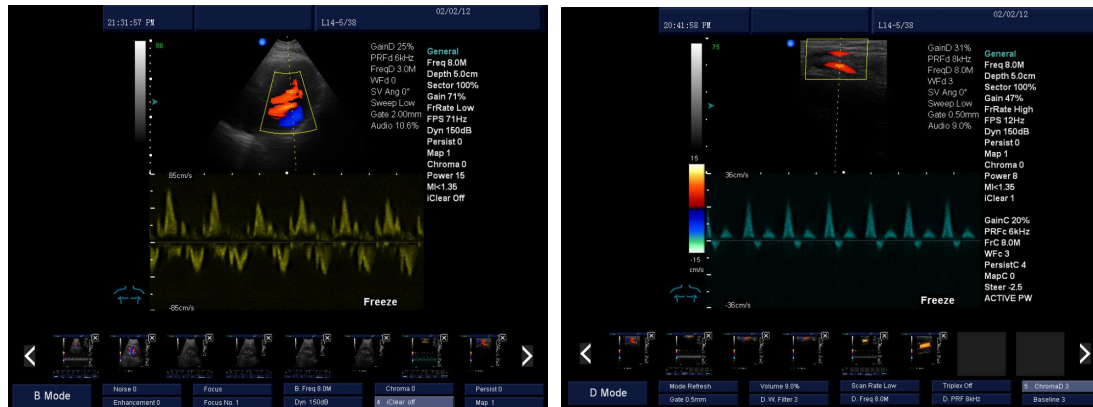
- B mode: distance, circumference, area, volume, angle, fetal growth, cruve
- M mode: distance, time, velocity, heart rate
- Software package: abdomen, gynecology, obstetrics, cardiology, small parts, urology

### Others

- Transducer connectors: 1 active transducer connector port
- Peripheral ports: Dicom, print, video, VGA, 2 USB ports
- Power supply: 100~240VAC+\_10%, 50Hz/60Hz

### Transducers:

- Electronic convex array transducer    Electronic transvaginal array transducer
- Electronic linear array transducer    Electronic micro-convex transducer





# Forever Medical

